

OPOLE

LOGISTIC PARK



www.astrid-logistik.eu

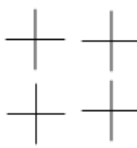
MODERN LOGITSTICS PARK



Leasable area approx. 57,000 m²



Storage height 10.40m - 34.12 feet



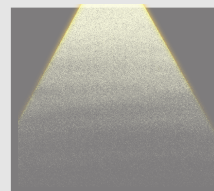
Column grid 12 m x 24 m



Floor load capacity 6T/m²



Fire load $Q < 4.000 \text{ MJ/m}^2$



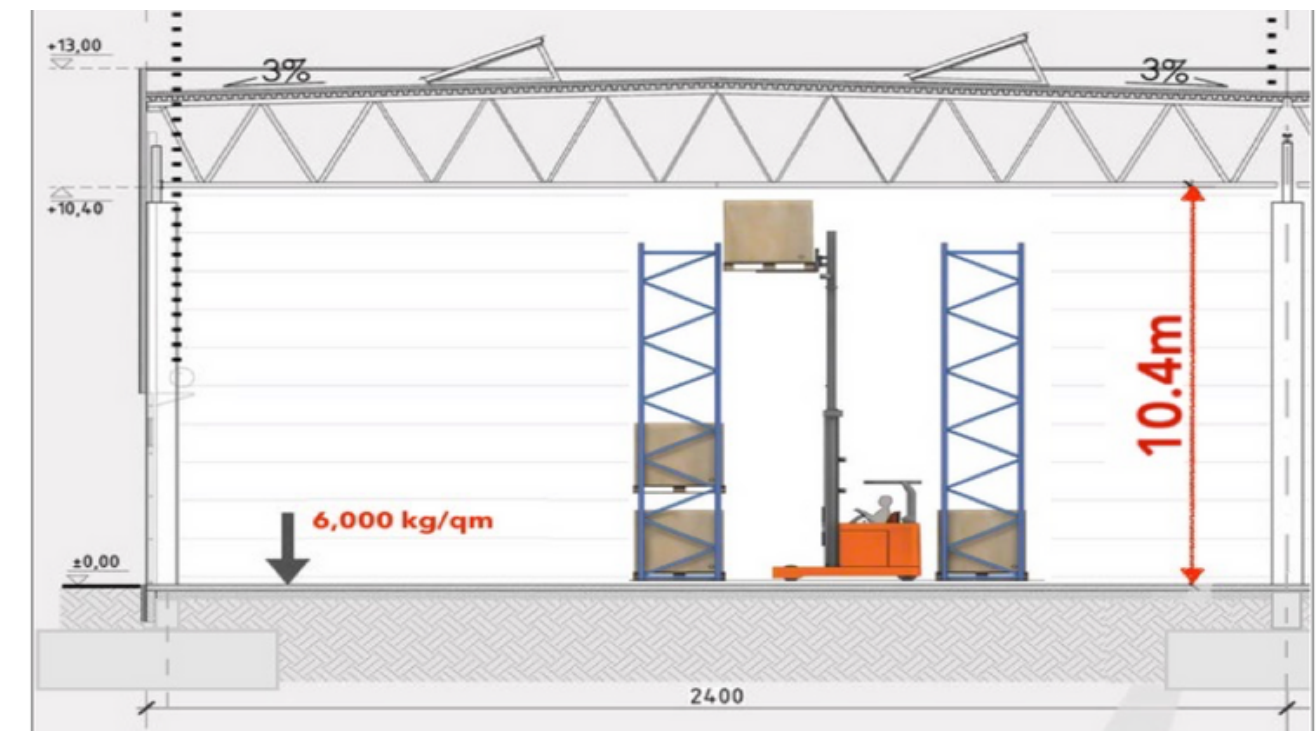
LED lighting



Innovative heating and cooling system Viessmann

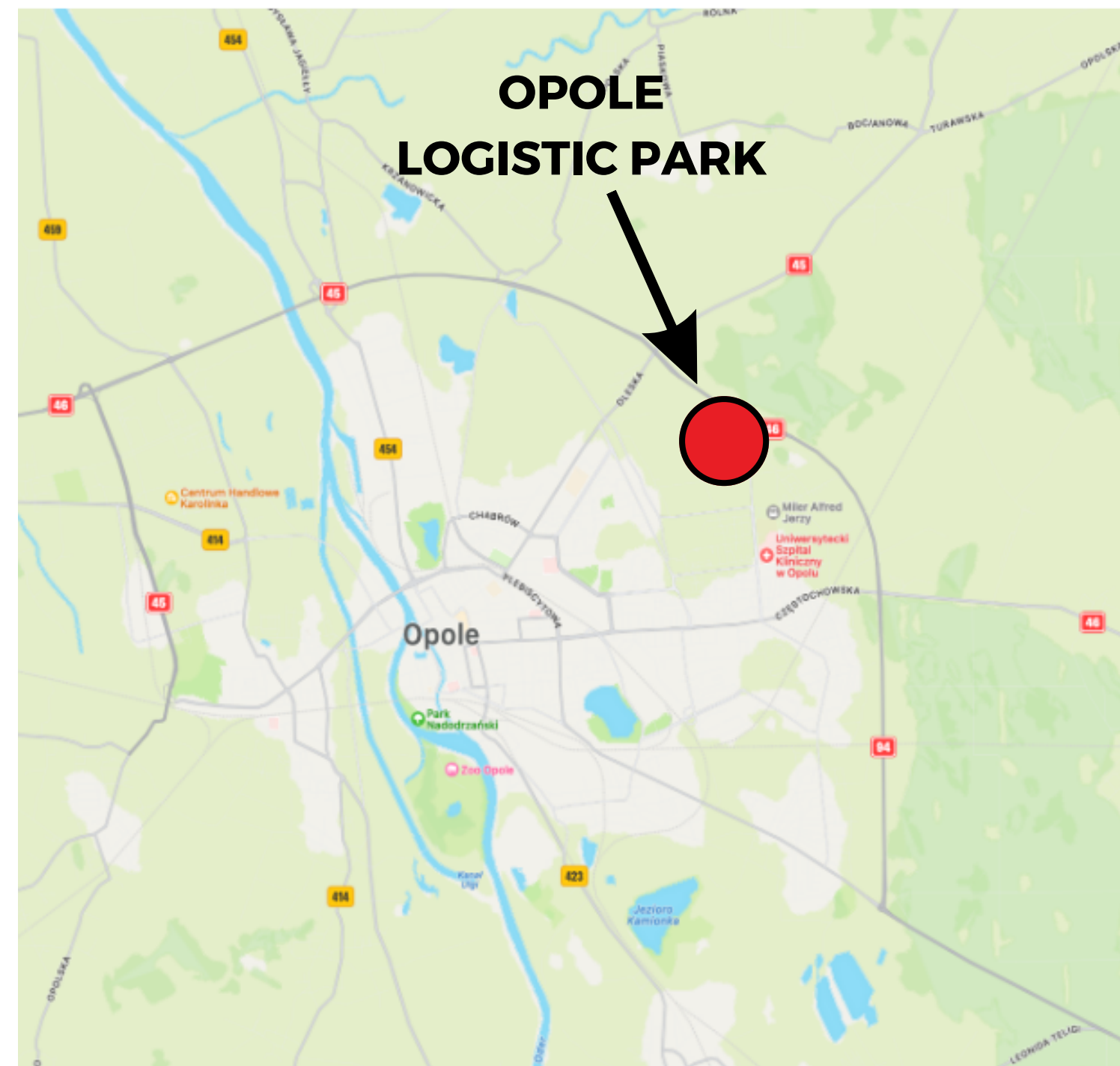
BTS

Warehouses and office space adapted to tenant requirements
BUILT TO SUIT



MAP

ON THE BYPASS ROAD OF OPOLE B94 AND B46

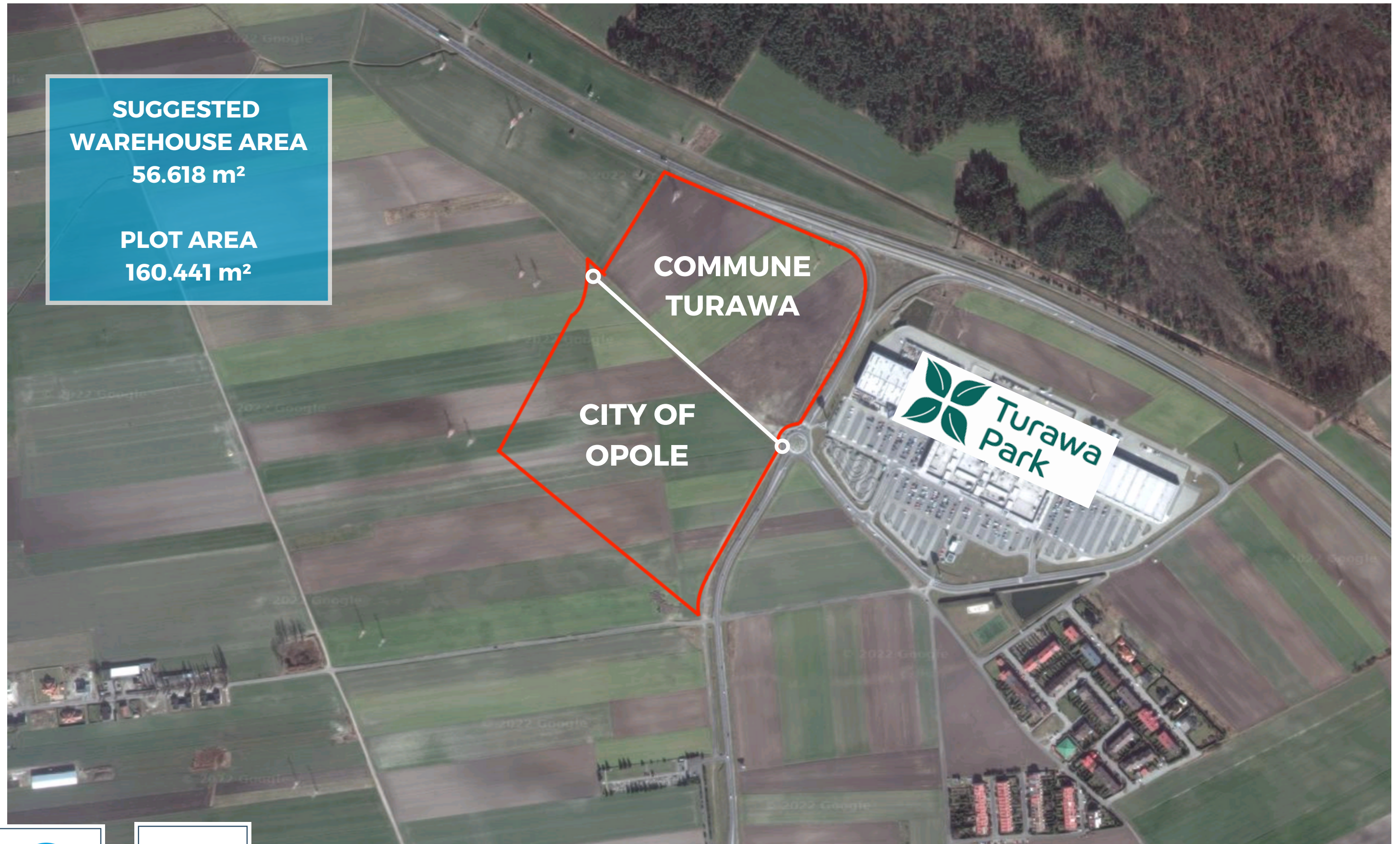


MAP

- ⇒ WELL LOCATED AND VISIBLE FROM DISTANCE
- ⇒ CONVENIENTLY CONNECTED AND EASILY ACCESSIBLE BY PUBLIC TRANSPORT



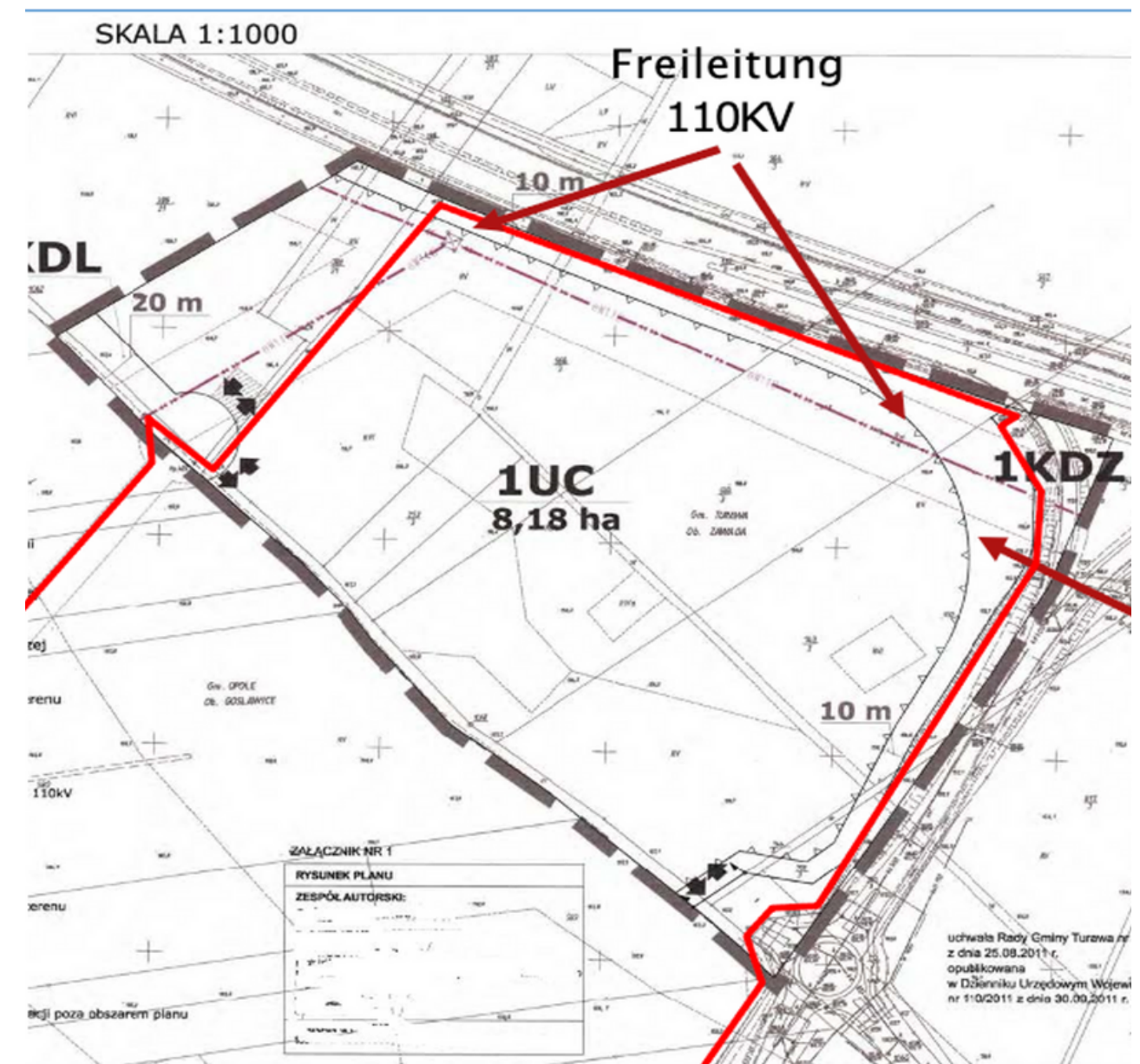
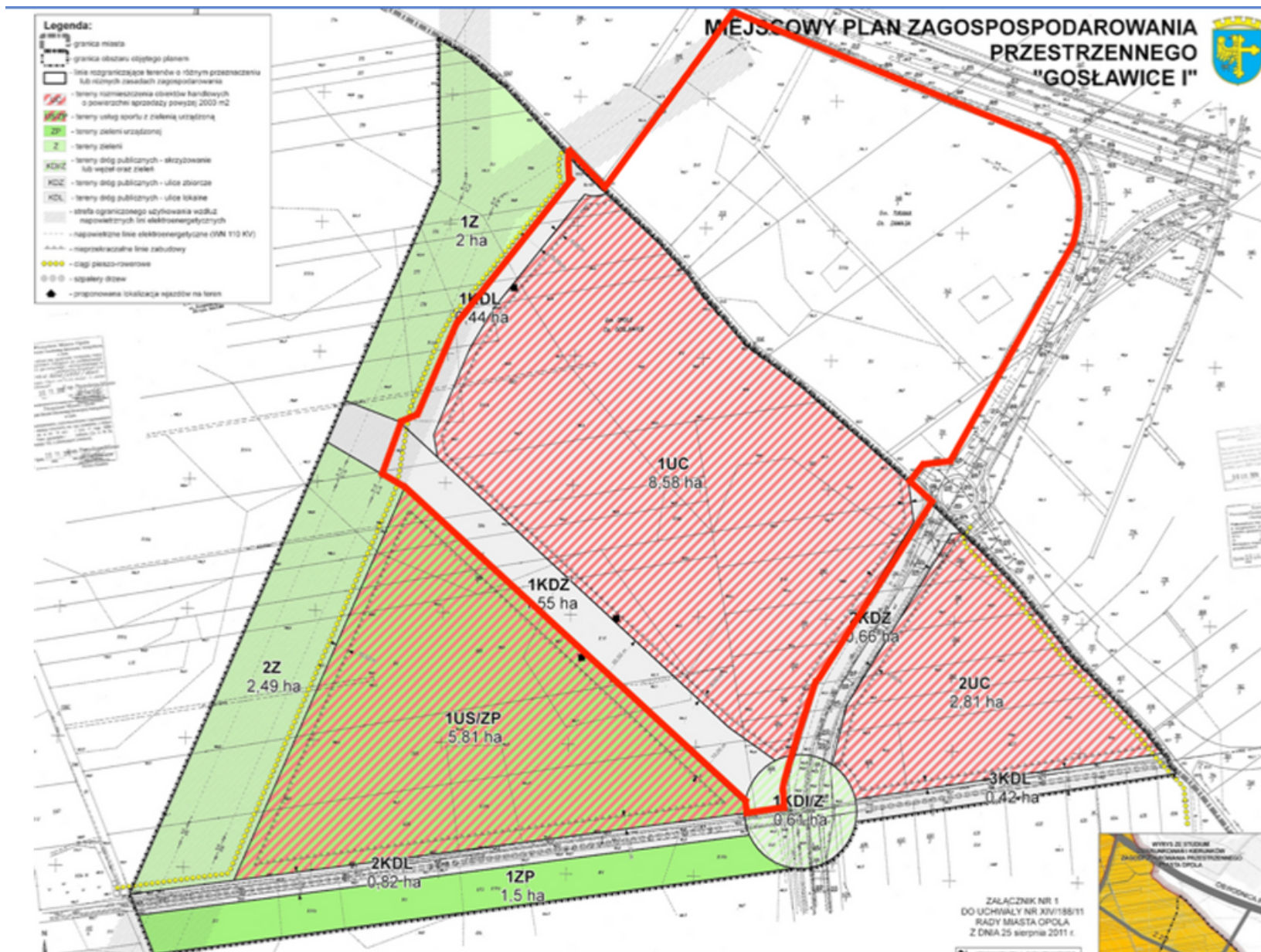
MAP



LOCAL LAND USE PLANNING

ACCORDING TO THE LOCAL LAND USE PLANNING:

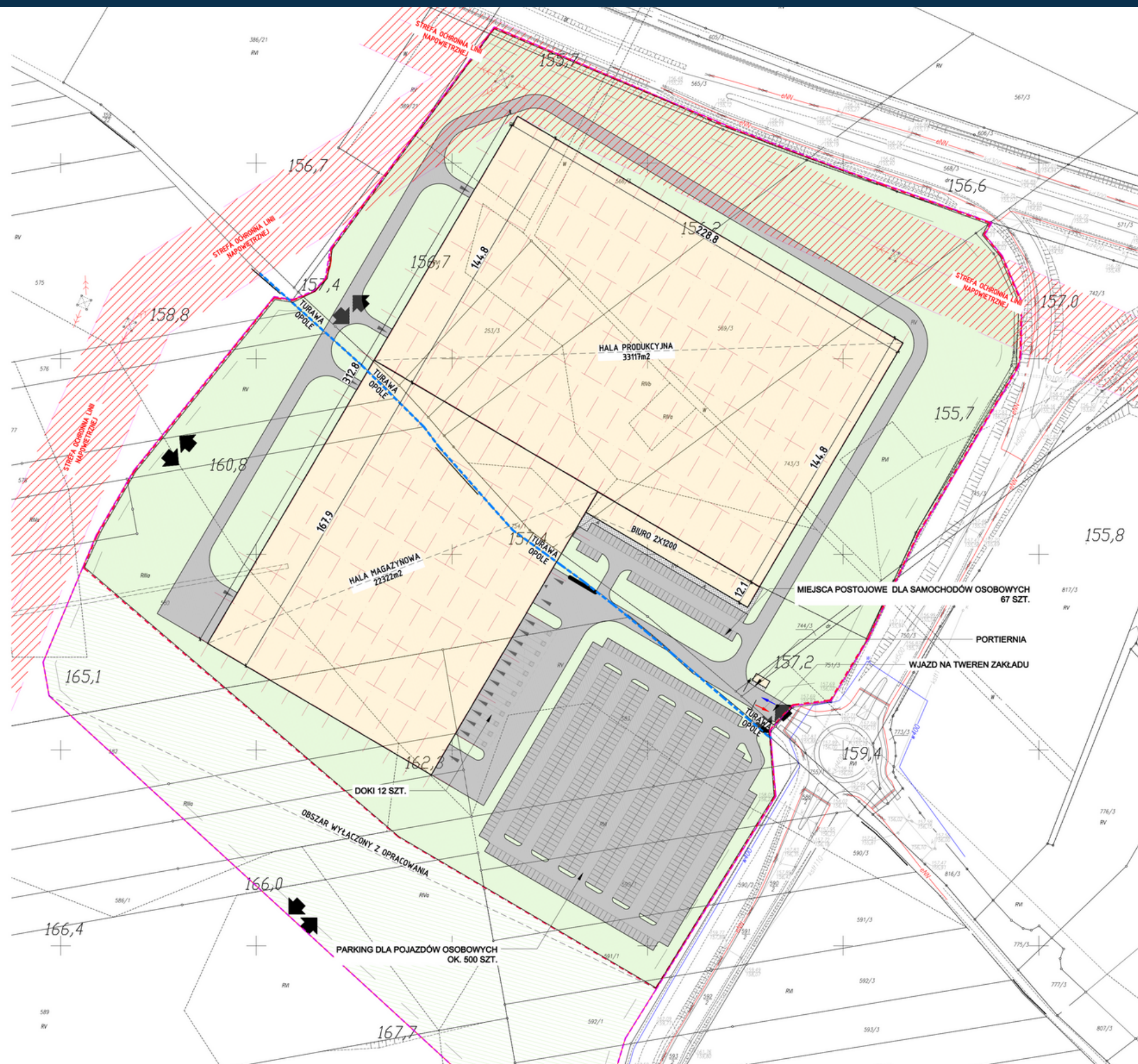
It will be permissible to build logistics, trade, industrial and commercial halls with a total area of up to 72,000 square meters and a height of up to 35 meters.



SITE PLAN

POSSIBLE USE AS
LOGISTICS, TRADE,
INDUSTRIAL,
COMMERCIAL HALLS
AND OFFICES WITH A
TOTAL AREA OF 67,332
SQM AND A HEIGHT OF UP
TO 35 M.

OUR SUGGESTED
WAREHOUSE AREA IS
56,000 MSQ



OPOLE LOGISTIC PARK

+48 727 455 555



INVESTOR

ASTRID-LOGISTIK-PARK-3 SP. Z O.O.

E-MAIL: INFO@ASTRID-LOGISTIK.EU



DESIGN AND BUILD

EURO-CONSULTING

E-MAIL: LOGISTYKA@EUROCONSULTING.COM.PL